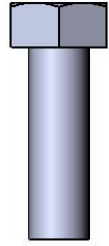


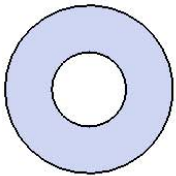
Model # B4MODERNPSM



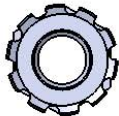
## HARDWARE



5/16" x 1"  
Machine Bolt



5/16" Washer



5/16" Kep Nut



# PRODUCT SPECIFICATIONS

## **B4MODERNPSM PORTABLE / SURFACE MOUNT CONTOURED BENCH WITHOUT BACK**

Seats: Seats dimensions are 30-1/4" x 72". 3/4" #9 steel expanded metal. End plates are made of 7 gauge flat steel plate. Reinforced with 3/16 x 1-1/2" flat strip. Electrically MIG welded.

Coating: Oven fused functionalized polyethylene copolymer-based thermoplastic. Fluidized bed coating application with superior mechanical performance, impact resistance and UV-stability.

Frame: Legs are 2-3/8" O.D. x 10 gauge pre-galvanized structural steel tubing. Legs are bent over a mandrel through the bend radius producing a wrinkle free bend. Seat mounting points are 7 gauge x 1-1/2" die stamped steel flat bar. Spreader bars are 2-3/8" O.D. x 10 gauge pre-galvanized structural steel tubing. A 4-1/8" steel plate makes up the footing. All electrically MIG welded.

Frame Coating: Electrostatic powder coated application oven cured.

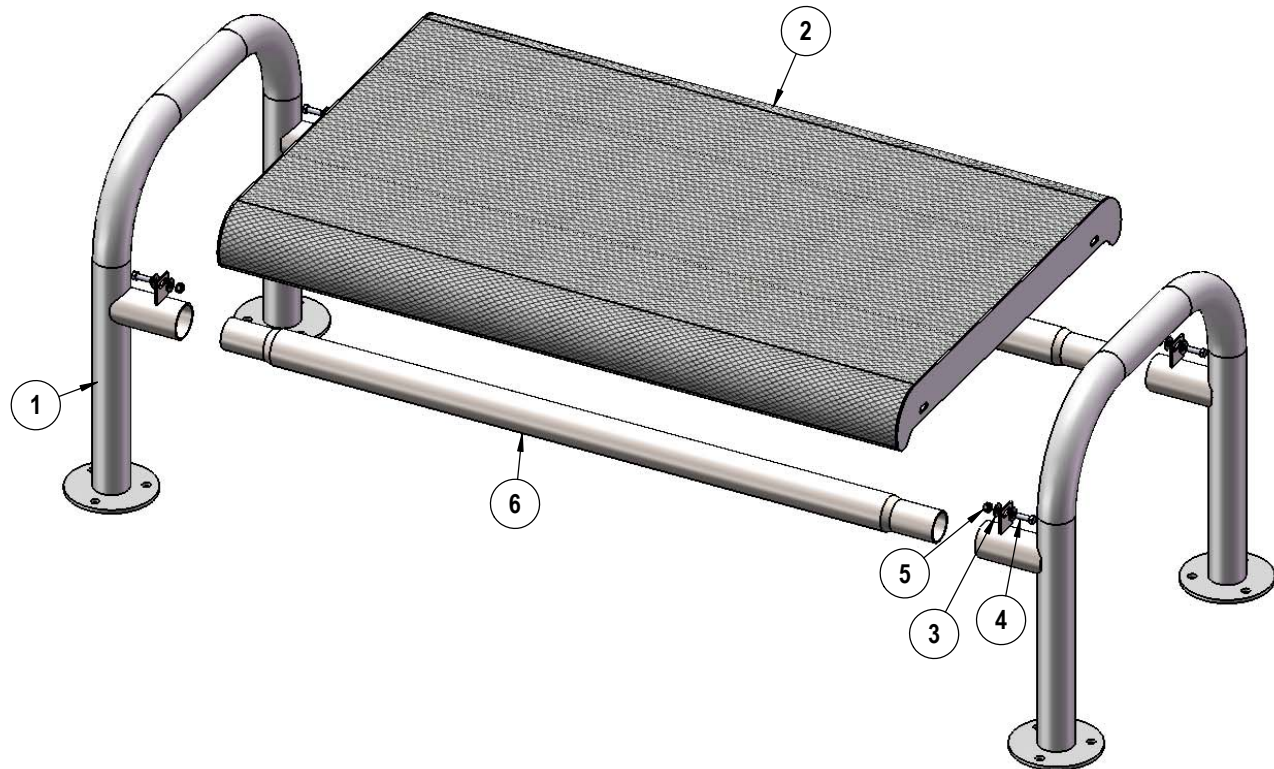
Hardware: All stainless steel hardware fasteners.

Dimensions: 4' portable / surface mount bench without back. Seats are 30" wide x 48" long. Seat height is 18-1/4" from the ground to the top of the seat. The overall dimensions are 56-1/2" x 30" x 25".



# INSTRUCTIONS

Insert the Spreader Tubes into the 966 Legs. Then attach the 4' Flat Contour Seat to the 966 Legs using specified hardware.



ITEM NO.	PartNo	DESCRIPTION	QTY
1	P-V966P	966 Portable Vinyl Leg	2
2	T-V48FCT-S	4' Expanded Flat Contour	1
3	33-02-0007	5/16" SS Washer	8
4	33-05-0029	5/16" x 1" Machine Bolt (SS)	4
5	33-03-0012	5/16" Kep Nut (SS)	4
6	01-01-0307	4' spreader tube	2

Optional Surface Mount Hardware:  
3/8" x 3-1/2" Concrete Expansion Anchor Bolts  
(Not Included)



# OVERALL DIMENSIONS

