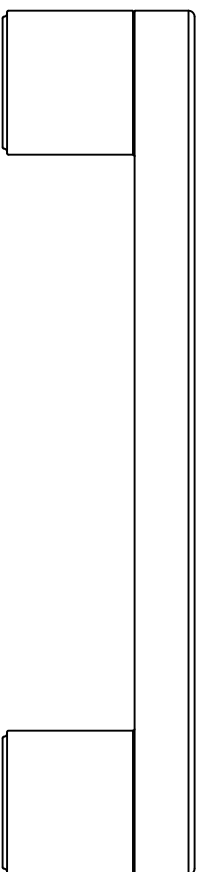
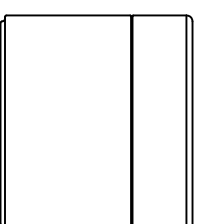


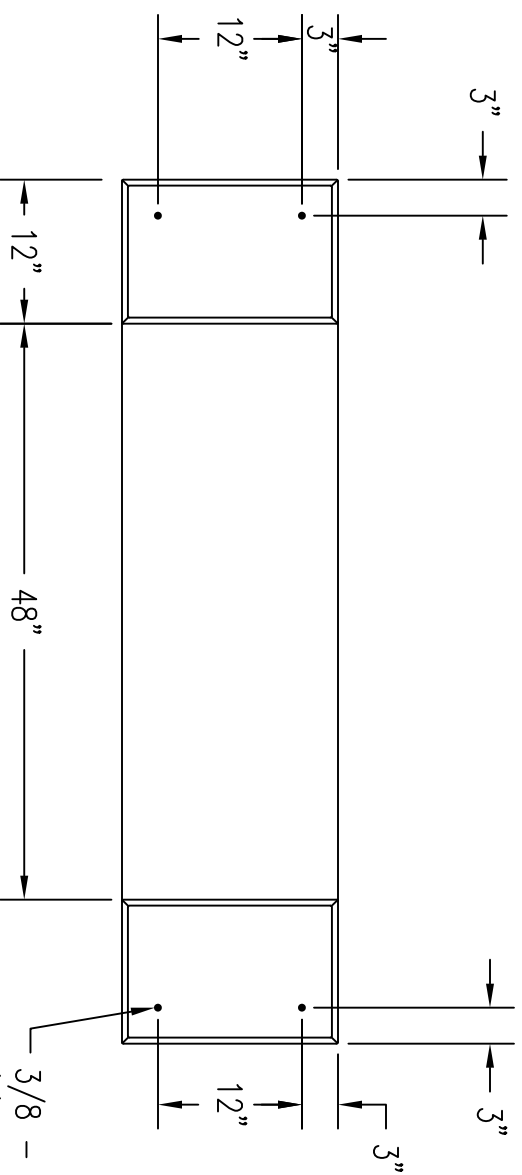
1 TOP VIEW OF BENCH
Scale: 1/16" = 1"



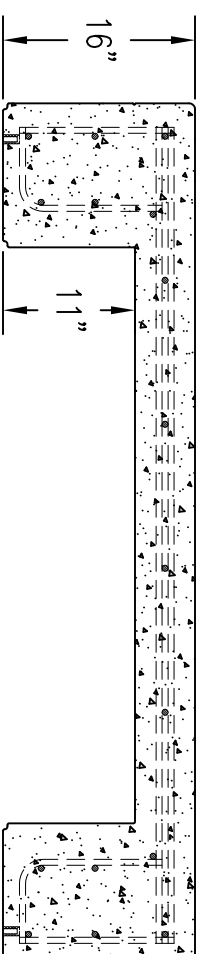
2 FRONT & BACK ELEVATION VIEW
Scale: 1/16" = 1"



4 END VIEW OF BENCH
Scale: 1/16" = 1"



3 BOTTOM VIEW OF BENCH
Scale: 1/16" = 1"



5 SECTION VIEW OF BENCH
Scale: 1/16" = 1"

P.O. BOX 1520 WAUSAU, WI 54402-1520
800-388-8728
E-MAIL: WTILE@WAUSAUTILE.COM
WEB SITE: WWW.WAUSAUTILE.COM



REVISION		NOTES
DRAWN BY	DATE	
PAW	2/28/11	CHANGED REBAR LAYOUT. DOUBLE REBAR ON THE 2 LONG SIDES

CONFIDENTIAL INFORMATION
THESE DRAWING, SPECIFICATIONS AND OTHER INFORMATION AND DOCUMENTS ACCOMPANYING THEM ARE THE CONFIDENTIAL AND PROPRIETARY PROPERTY OF WAUSAU TILE, INC. THE DRAWINGS THEMSELVES SHALL BELONG TO THE OWNER FOR USE ONLY ON THE PROJECT. ANY ADDITIONAL USE SHALL REQUIRE THE PRIOR WRITTEN APPROVAL OF WAUSAU TILE, INC. THE PROPRIETARY INFORMATION CONTAINED WITHIN THE DRAWINGS AND THE DOCUMENTS IS AND SHALL REMAIN THE SOLE PROPERTY OF WAUSAU TILE, INC

JOB NAME

LOCATION

UNLESS OTHERWISE SPECIFIED DIMENSIONS ARE IN INCHES FRACTIONS ± 1/8"

DRAWN BY: TAS

DATE: 1/28/15

CO NUMBER:

WEIGHT: 920 LBS

SHEET NO.

TF5027