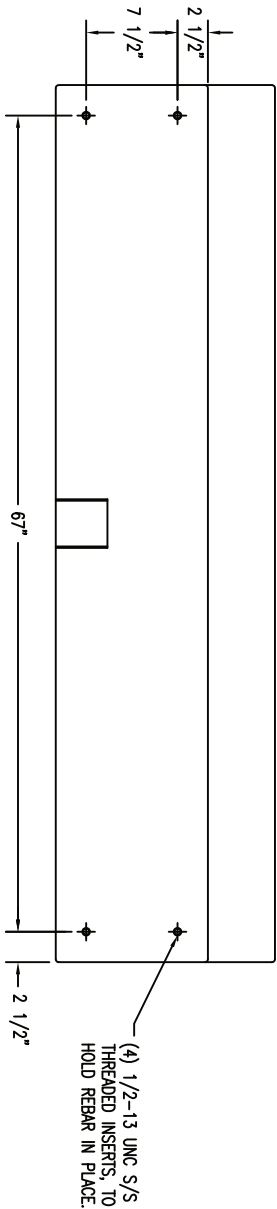




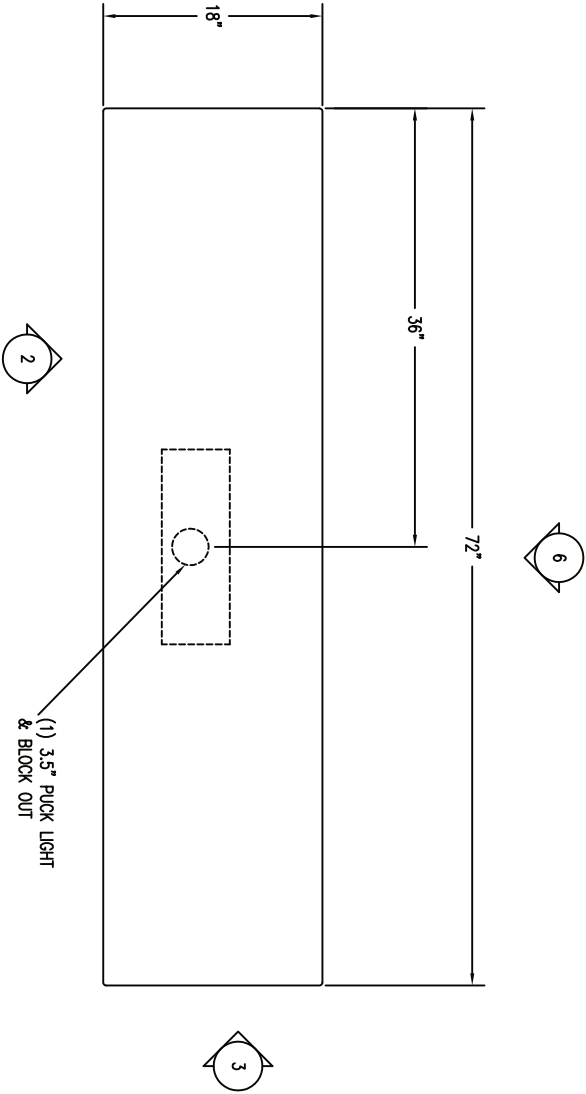
Size:	72" x 18" x 16"
Weight:	875 Lbs.
Material:	Reinforced Concrete
Reinforcing:	3/8" Dia. Steel Rebar
Features:	Light Fixture: (1) 3.5" LED Light 13w, 120v *See Light Spec
Options:	277v Transformer

Finish Options

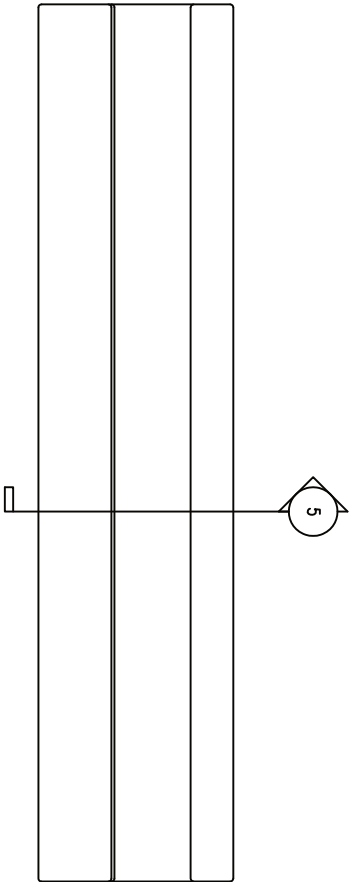
-Standard Color Palette



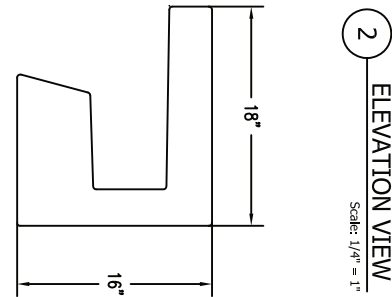
4 BOTTOM VIEW
Scale: 1/4" = 1"



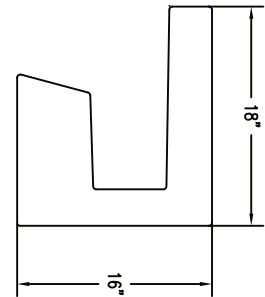
1 TOP VIEW
Scale: 1/4" = 1"



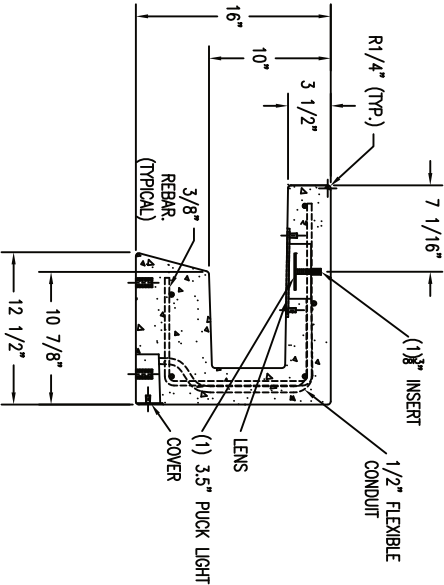
6 BACK ELEVATION VIEW
Scale: 1/4" = 1"



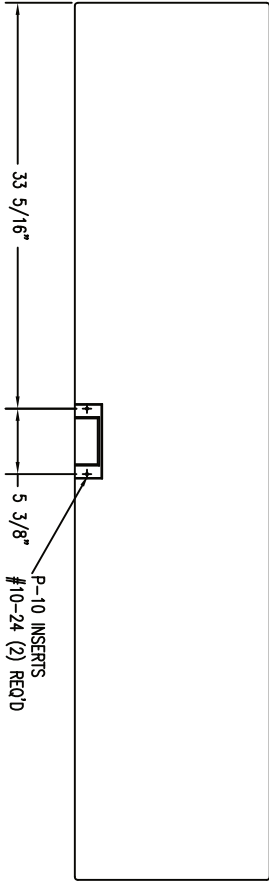
2 ELEVATION VIEW
Scale: 1/4" = 1"



3 END VIEW
Scale: 1/4" = 1"



5 SECTION
Scale: 1/4" = 1"



6 BACK ELEVATION VIEW
Scale: 1/4" = 1"

REVISIONS		
NAME	DATE	NOTES
1	---	---
2	---	---
3	---	---
4	---	---
5	---	---
6	---	---
7	---	---
8	---	---

CONFIDENTIAL INFORMATION
THESE DRAWING, SPECIFICATIONS AND OTHER INFORMATION AND DOCUMENTS ACCOMPANYING THEM ARE THE CONFIDENTIAL AND PROPRIETARY PROPERTY OF WAUSAU TILE, INC. THE DRAWINGS THEMSELVES SHALL BELONG TO THE OWNER FOR USE ONLY ON THE PROJECT. ANY ADDITIONAL USE SHALL REQUIRE THE PRIOR WRITTEN APPROVAL OF WAUSAU TILE, INC. THE PROPRIETARY INFORMATION CONTAINED WITHIN THE DRAWINGS AND THE DOCUMENTS IS AND SHALL REMAIN THE SOLE PROPERTY OF WAUSAU TILE, INC

WAUSAU TILE INC.

WAUSAU, WI

UNLESS OTHERWISE SPECIFIED
DIMENSIONS ARE IN INCHES
FRACTIONS ± 1/8"

DRAWN BY: TAS

DATE: 2/2/17

CO NUMBER: ?

WEIGHT: 875 LBS

SHEET NO.

WS-151