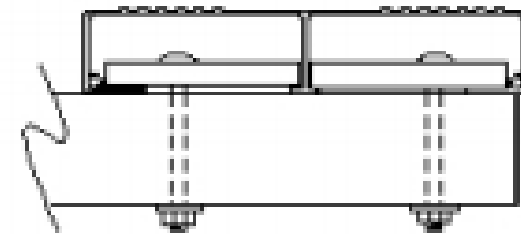
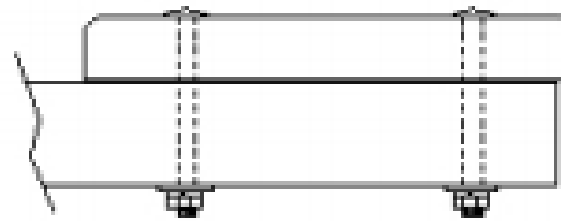


2" x 10" ANODIZED  
ALUMINUM PLANK



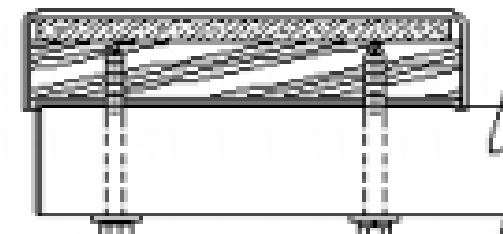
5/16" x 3 1/2" CARRIAGE BOLT  
62PGA

2" x 10" CCA TREATED  
SYP WOOD PLANK



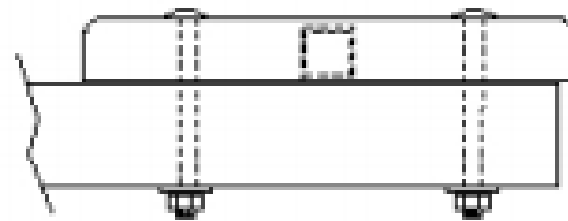
3/8" x 4 1/2" CARRIAGE BOLT  
62PGP

2" x 10" REINFORCED  
FIBERGLASS PLANK



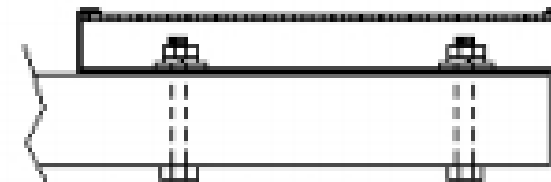
3/8" x 4" LAG BOLT  
62PGF

2" x 10" REINFORCED  
RECYCLED PLASTIC



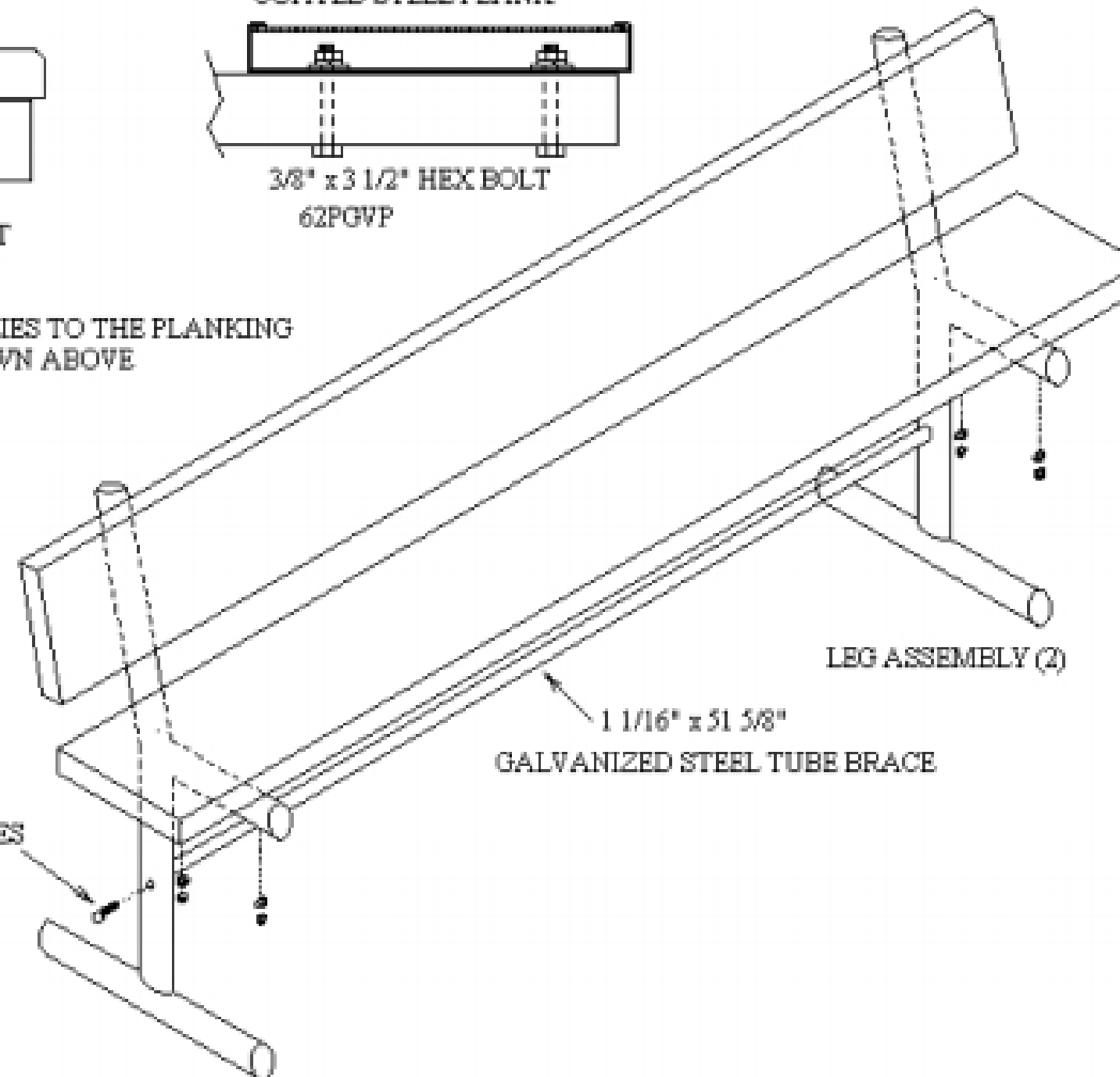
3/8" x 4 1/2" CARRIAGE BOLT  
62PGRRP

2" x 10" VINYL PLASTIC  
COATED STEEL PLANK



3/8" x 3 1/2" HEX BOLT  
62PGVP

ATTACH THE LEG ASSEMBLIES TO THE PLANKING  
WITH HARDWARE AS SHOWN ABOVE



LEG ASSEMBLY (2)

1 1/16" x 51 5/8"  
GALVANIZED STEEL TUBE BRACE

THIS 3" x 1/2" HEX BOLT GOES  
THROUGH THE LEG AND  
SCREWS INTO THE BRACE