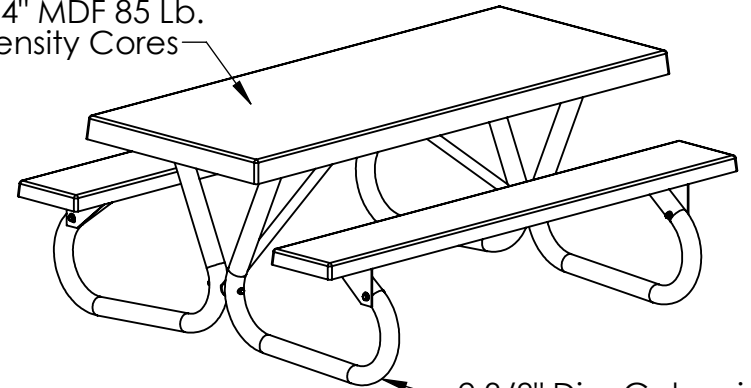


Fiberglass Top  
And Seats With  
3/4" MDF 85 Lb.  
Density Cores



2 3/8" Dia. Galvanized  
High Tensile Tubing, 12  
Gauge Wall Thickness

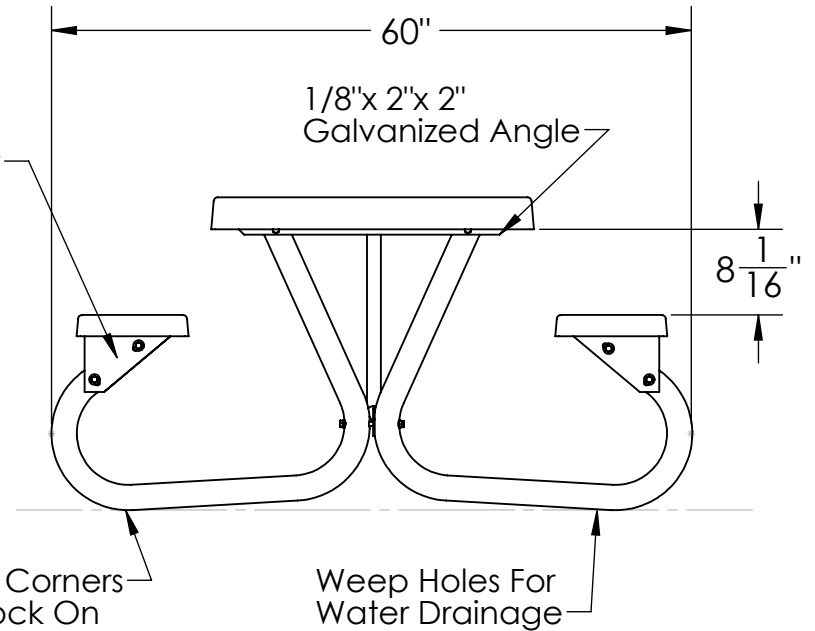


Table Rests On Four Corners  
So That It Will Not Rock On  
Uneven Ground

## GENERAL NOTES

DIMENSIONS ARE IN INCHES  
TOLERANCES: LINEAR:  $\pm 1/16$   
ANGULAR:  $\pm 1^\circ$



CONFIDENTIAL DRAWING.  
INFORMATION IS NOT TO BE COPIED OR  
DISCLOSED TO OTHERS WITHOUT  
CONSENT OF KAY INDUSTRIES.  
SPECIFICATIONS SUBJECT TO CHANGE  
WITHOUT NOTICE.

SHEET SIZE

**A**

SCALE

**1:24**

REV

DRAWN BY

DAT

8/27/2018

DESC:

6 FT. BG TABLE FIBER GLASS SEATS and TOP

APPROVED

MATL:

LAST SAVED

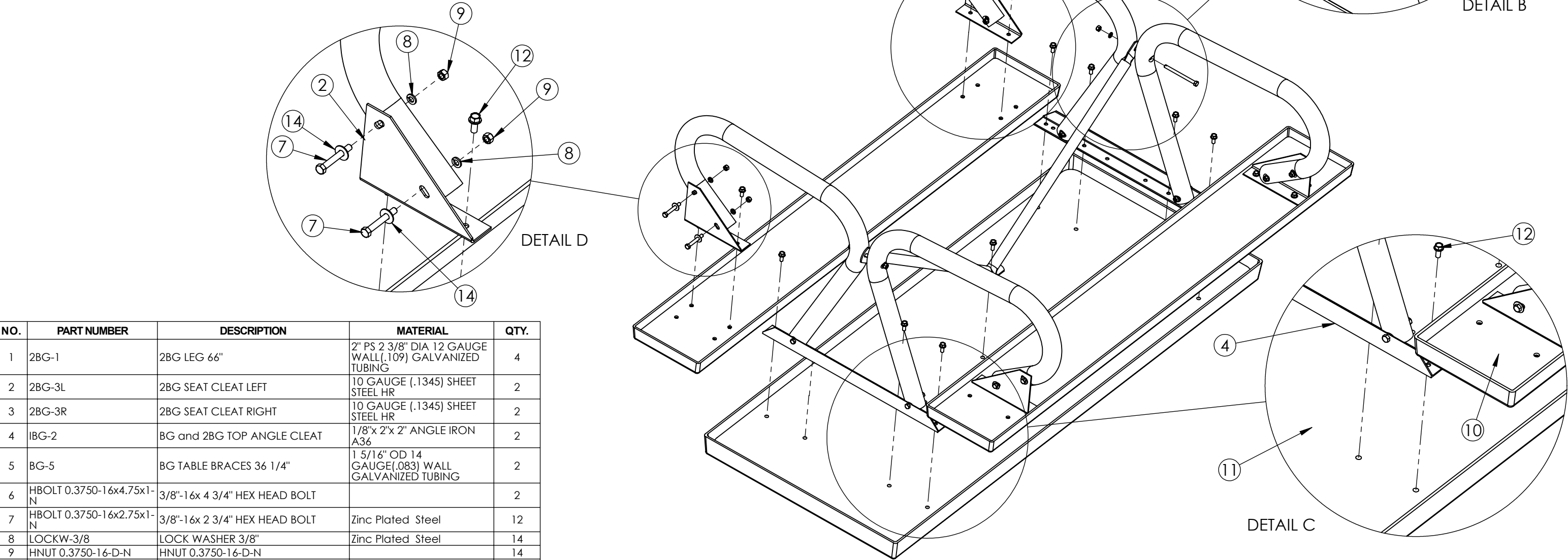
dave1

8/28/2018

**PARTNO: 62BGF**

LEAVE ALL BOLTS AND NUTS FINGERTIGHTENED UNTIL ALL ARE IN PLACE

1. Lay the Table Top on an Even Flat Surface with the Best Side Facing the Ground. The Fiberglass Top will have Pre-Drilled Holes To Accept The 3/8"x 7/8" Flanged Hex Head Bolt.
2. Assemble The Leg Sets As Shown On Sheet No. 3, Align the Holes In the Angle Iron Top Bracket With The Holes In The Fiberglass Top. Face The Angle Iron Top Brackets As Shown At Right.
3. Attach the Legs to the Angle Iron Top Cleats with 3/8"-16x 2 3/4" Hex Head Bolts, Lock Washers, and Nuts. Attach The Top Cleats To The Fiberglass Top With 3/8"-16x 7/8" Flanged Hex Head Bolts.
4. Place the Tube Brace as Shown, The One Flat Side that Fits Between the Legs will use a 3/8"-16x 4 3/4" Hex Head Bolt with Lock Washer and Nut.
5. There Will be Left and Right Seat Cleats, Fasten as Shown to the Under Side of the Seat Planks, Then Attach Them to the Legs.
6. Once All of the Hardware has Been Installed, Then Begin to Tighten the Bolts and Nuts



NO.	PART NUMBER	DESCRIPTION	MATERIAL	QTY.
1	2BG-1	2BG LEG 66"	2" PS 2 3/8" DIA 12 GAUGE WALL(.109) GALVANIZED TUBING	4
2	2BG-3L	2BG SEAT CLEAT LEFT	10 GAUGE (.1345) SHEET STEEL HR	2
3	2BG-3R	2BG SEAT CLEAT RIGHT	10 GAUGE (.1345) SHEET STEEL HR	2
4	IBG-2	BG and 2BG TOP ANGLE CLEAT	1/8"x 2"x 2" ANGLE IRON A36	2
5	BG-5	BG TABLE BRACES 36 1/4"	1 5/16" OD 14 GAUGE(.083) WALL GALVANIZED TUBING	2
6	HBOLT 0.3750-16x4.75x1-N	3/8"-16x 4 3/4" HEX HEAD BOLT		2
7	HBOLT 0.3750-16x2.75x1-N	3/8"-16x 2 3/4" HEX HEAD BOLT	Zinc Plated Steel	12
8	LOCKW-3/8	LOCK WASHER 3/8"	Zinc Plated Steel	14
9	HNUT 0.3750-16-D-N	HNUT 0.3750-16-D-N		14
10	6IF-8	6' FIBERGLASS SEAT ASSY WITH MDF CORE		2
11	6IPTF-9	6 FT. FIBERGLASS TOP WITH 85 LB DENSITY CORE		1
12	IN-HWMS 0.375-16x0.875x0.875-N	3/8"-16x 7/8" FLANGED HEX HEAD BOLT		16
13	IN-HWMS 0.375-16x1x1-N	3/8"-16x 1" FLANGED HEX HEAD BOLT		1
14	Regular FW 0.375	3/8" REGULAR FLAT WASHER		8

#### GENERAL NOTES

Built In House  
PATH TO PART OR ASSM - S:\CADDRWGS\Solidworks\Tables\BG\

DIMENSIONS ARE IN INCHES  
TOLERANCES: LINEAR: ± 1/16"  
ANGULAR: ± 1°



CONFIDENTIAL DRAWING.  
INFORMATION IS NOT TO BE COPIED OR  
DISCLOSED TO OTHERS WITHOUT  
CONSENT OF KAY INDUSTRIES.  
SPECIFICATIONS SUBJECT TO CHANGE  
WITHOUT NOTICE.

SHEET SIZE  
**B**

SCALE  
**1:24**

REV

DRAWN BY

DAT

8/27/2018

APPROVED

LAST SAVED

davet

8/28/2018

DESC: 6 FT. BG TABLE FIBER GLASS SEATS and TOP

MATL:

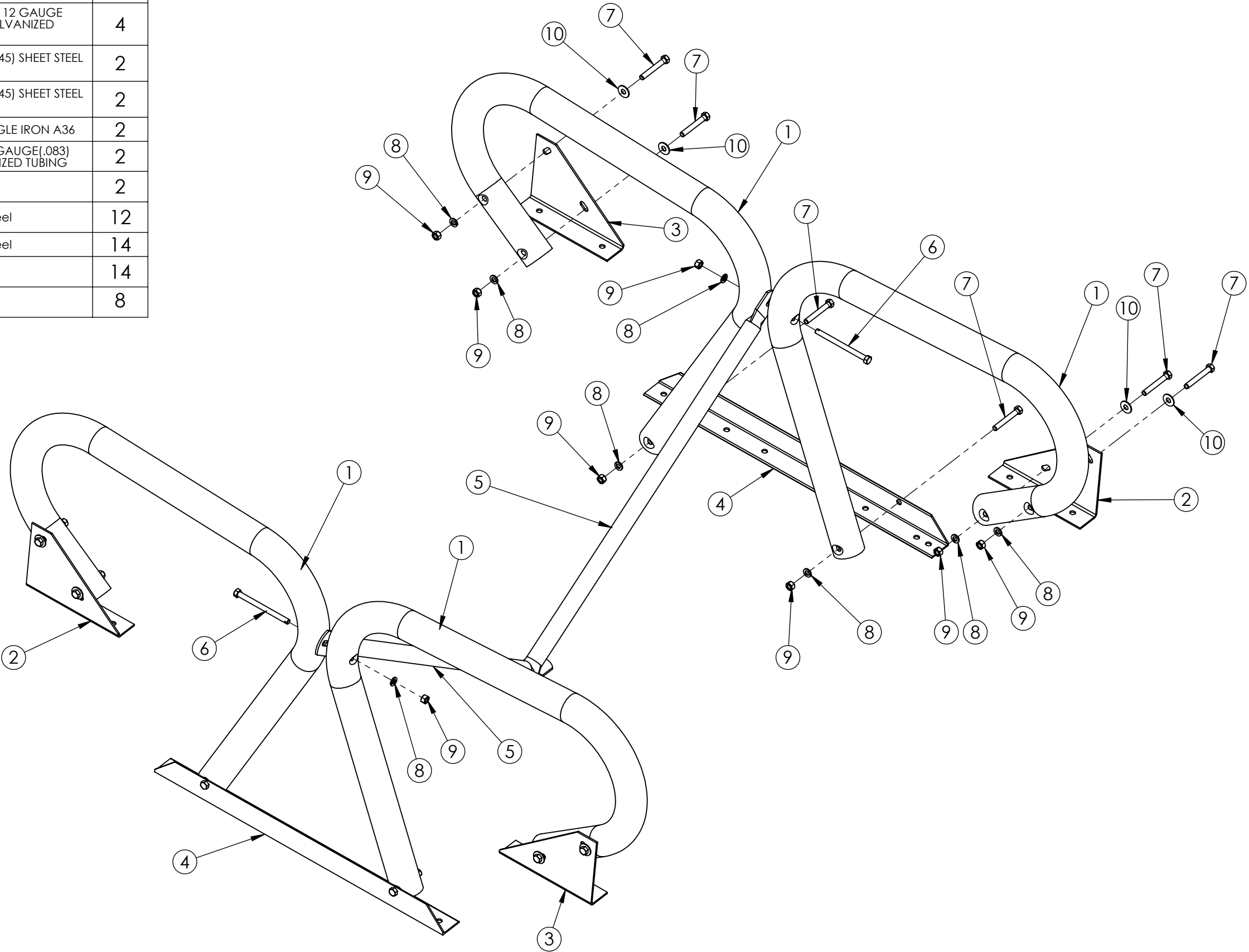
**PARTNO: 62BGF**

Configuration - Default

8/28/2018 07:24:11

SHEET 2 OF 3

NO.	PART NUMBER	DESCRIPTION	MATERIAL	QTY.
1	2BG-1	2BG LEG 66"	2" PS 2 3/8" DIA 12 GAUGE WALL(.109) GALVANIZED TUBING	4
2	2BG-3L	2BG SEAT CLEAT LEFT	10 GAUGE (.1345) SHEET STEEL HR	2
3	2BG-3R	2BG SEAT CLEAT RIGHT	10 GAUGE (.1345) SHEET STEEL HR	2
4	IBG-2	BG and 2BG TOP ANGLE CLEAT	1/8"x 2"x 2" ANGLE IRON A36	2
5	BG-5	BG TABLE BRACES 36 1/4"	1 5/16" OD 14 GAUGE(.083) WALL GALVANIZED TUBING	2
6	HBOLT 0.3750-16x4.75x1-N	3/8"-16x 4 3/4" HEX HEAD BOLT		2
7	HBOLT 0.3750-16x2.75x1-N	3/8"-16x 2 3/4" HEX HEAD BOLT	Zinc Plated Steel	12
8	LOCKW-3/8	LOCK WASHER 3/8"	Zinc Plated Steel	14
9	HNUT 0.3750-16-D-N	HNUT 0.3750-16-D-N		14
10	Regular FW 0.375	3/8" REGULAR FLAT WASHER		8



GENERAL NOTES

Built In House  
PATH TO PART OR ASSM - S:\CADDRWGS\Solidworks\Tables\BG\

DIMENSIONS ARE IN INCHES  
TOLERANCES: LINEAR:  $\pm 1/16$   
ANGULAR:  $\pm 1^\circ$

CONFIDENTIAL DRAWING.  
INFORMATION IS NOT TO BE COPIED OR  
DISCLOSED TO OTHERS WITHOUT  
CONSENT OF KAY INDUSTRIES.  
SPECIFICATIONS SUBJECT TO CHANGE  
WITHOUT NOTICE.



SHEET SIZE  
**B**

SCALE  
**1:16**

REV

DRAWN BY

DAT

8/27/2018

APPROVED

LAST SAVED

davet

8/28/2018

DESC: 6 FT. BG TABLE FIBER GLASS SEATS and TOP

MATL:

**PARTNO: 62BGF**

Configuration - Default

8/28/2018 07:24:11

SHEET 3 OF 3