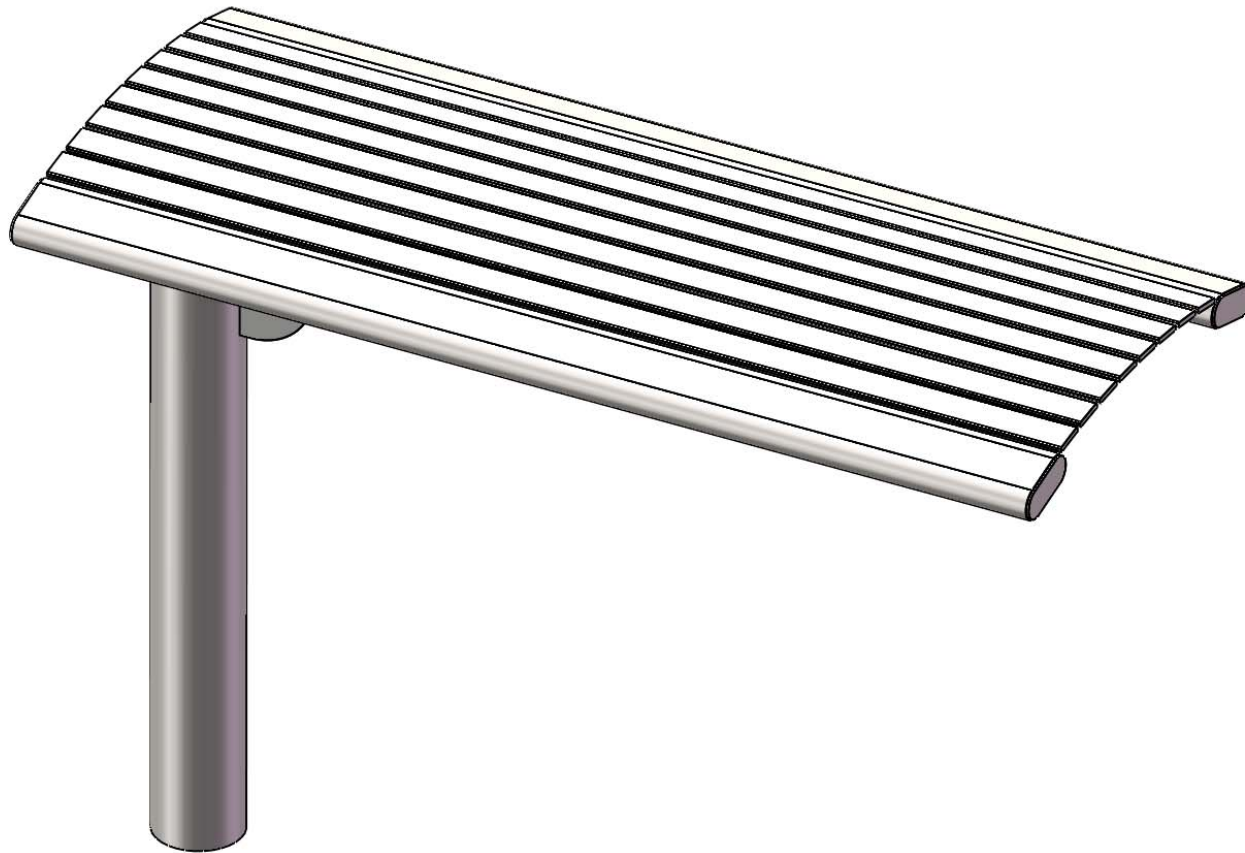
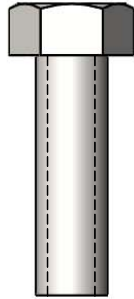


# *Site Amenities*

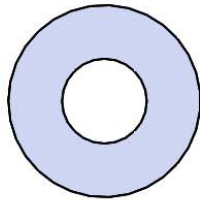


Model # B4ARS-ST-CANT

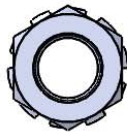
# HARDWARE



3/8" x 1-1/4"  
MACHINE BOLT



3/8" FLAT  
WASHER



3/8" KEPNUT

# ULTRA SITE PRODUCT SPECIFICATIONS

## **66S-HS4 INGROUND MOUNT BENCH**

Seat: Is fabricated from 1 ½" x ¼" flat steel strips. Reinforced with 1/4" thick support ribs. End Planks are made from 1-1/2" x 3-1/2" steel oval tubing.

Frame: 4" diameter x 11 gauge structural steel tubing. Attachment plates are 1/4" thick flat steel. All electrically MIG welded.

Coating: Steel is sandblasted to near white condition. Coated with zinc rich epoxy primer and top coated with electrostatic powder coat, oven cured.

Dimensions: 4' inground mounted bench without back. Seat is 20" wide x 48" long. Seat height is 17-5/8" from the ground to the top of the seat. The overall dimensions are 48" x 20" x 35-1/8"

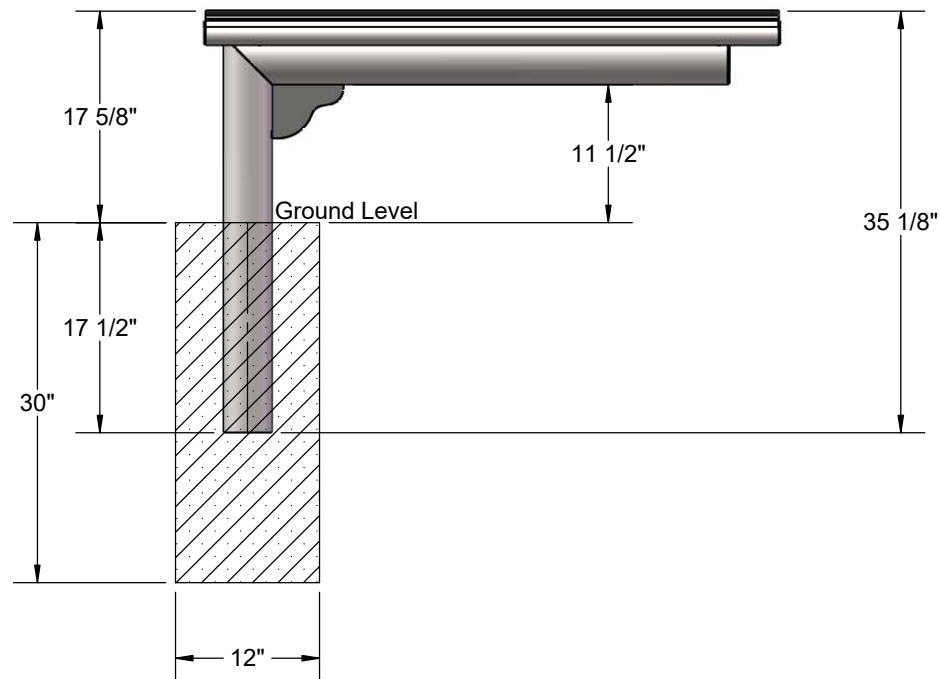
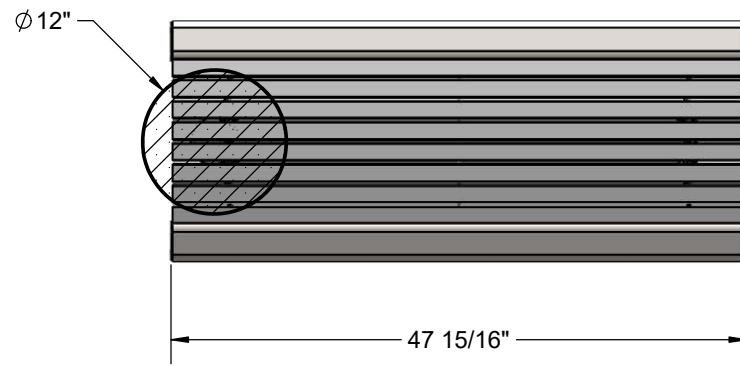
## COMPONENTS

Attach the 4' seats to the 66 Bench Legs using specified hardware.



| ITEM NO. | PartNo     | DESCRIPTION                      | Qty. |
|----------|------------|----------------------------------|------|
| 1        | 01-01-0889 | 66 Bench Leg - Inground          | 1    |
| 2        | 01-01-0897 | 4' horizontal slat seat assembly | 1    |
| 3        | 33-02-0008 | 3/8" Flat Washer (SS)            | 8    |
| 4        | 33-05-0078 | 3/8" x 1 1/4" Machine Bolt (SS)  | 4    |
| 5        | 33-03-0013 | 3/8" Kep Nut (SS)                | 4    |

# FOOTING



Estimated Concrete Required:  
6 Bags of Concrete Mix

## OVERALL DIMENSIONS

