



SHOWN: AURORA
868ARU-BSA

11' Octagon Cantilever Umbrella- Matte Silver Finish
w/ 9 oz. Marine Grade Blue Stripe Acrylic

AURORA *ARU*

PREMIUM - CANTILEVER UMBRELLA

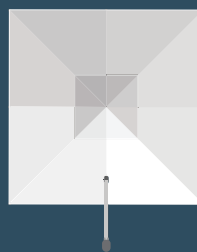
Maximize your space without a traditional center post. The Aurora is manufactured using the most durable materials and fabric available to provide years of trouble-free use and enjoyment. Its Infinity Tilt allows you to change positions effortlessly. This modern cantilever is suitable for use in low to moderate wind conditions and ensures hours of protection from the sun and light rain.

S H A P E S & S I Z E S



OCTAGON

11' / 3.5m



SQUARE

9' x 9' / 2.8m

AURORA **ARU**

PREMIUM - Cantilever Umbrella

SHOWN: 868ARU-PBA

11' Octagon Cantilever Umbrella - Matte Silver Finish w/ 9 oz. Marine Grade Pacific Blue Acrylic



FRAME FINISHES

MATTE SILVER



MS

Frame finishes including Golden Oak **WG**, Matte Black **BK**, Matte White **WH**, Matte Bronze **BZ**, are available at an increased cost and extended lead times up to 12 weeks.

FEATURES

Full 360° rotation combined with the Infinity Tilt provides countless hours of maximum shade.

The crank lift is built for commercial use, yet designed for smooth and effortless operation in any environment.

Manufactured with extruded aluminum.

Stainless-steel hardware throughout.

Wind Stabilizer Kit and Black Polyester Protective Cover Bag included.

Mounting options include permanent, semi-permanent, and free-standing bases for installation on any surface.

Engineered to withstand 25 MPH winds. Included Wind Stabilizer Kit increases tolerance by 5 MPH.
Please consult a licensed professional for in-ground or surface mounting installations.



868ARU - 11' / 3.5M OCTAGON

- A. overall height: 110" / 280cm
- B. clearance: 80" / 203cm
- C. closed clearance: 33" / 83cm
- D. overall depth: 143" / 363cm
- MAST: 2.75" x 4" / 7 x 10cm
- WEIGHT: 105 lbs. / 57 kg.



877ARU-SQ- 9' x 9' / 2.8M SQUARE

- A. overall height: 110" / 280cm
- B. clearance: 80" / 203cm
- C. closed clearance: 29" / 73cm
- D. overall depth: 123" / 312cm
- MAST: 2.75" x 4" / 7 x 10cm
- WEIGHT: 90 lbs. / 40 kg.

Umbrella clearance dimensions are measured while not mounted in a base. Depending on the selected base, these clearance measurements will change. All dimensions have a +/- 5" tolerance based on multiple variables; pin placement height, crank tautness and fabric weight.

Please consult a licensed professional for in-ground or surface mounting installations.

SPECIFIC MOUNTING **AURORA** Please see further details on page(s) 55

40G-36GD Double Galvanized Plate Stack

W: 335 lbs./152 kg. D: 40"/101cm H: 1"/2.5cm

Free-Standing Base

36G-SQx2 Double Galvanized Plate Stack

W: 400 lbs./181 kg. D: 36"/91cm H: 1"/2.5cm

Free-Standing Base

ARU-480 Wheel Base (SHIPSEEMPTY)

W: 80 lbs./36 kg. D: 36"/91cm H: 5"/13cm

Free-Standing Base

XB Modular Free-Standing Base w/XBC Cover

W: 48 lbs./21 kg. D: 40"/101cm H: 5"/12cm

Free-Standing Base ASSEMBLY REQUIRED

XBC Modular Free-Standing Base Cover

W: 4 lbs./2 kg. D: 40"/101cm H: 4.5"/11cm

Optional Cover ASSEMBLY REQUIRED

ARU-DPSurface Mounting Plate

W: 12 lbs./5 kg. D: 12.5"/32cm H: .5"/12.7mm

Installed Surface Mount

ARU-IG In-Ground Mount

W: 18 lbs./8 kg. D: 8"/20cm H: 20"/50cm

Installed In-Ground Mount

SPECIFIC MOUNTING *AURORA*



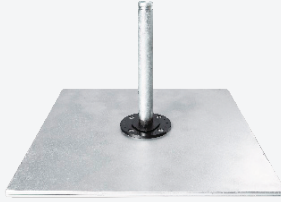
40G-36G Double Galvanized Plate Stack

W:335 lbs./151 kg. **D:**40"/101cm **H:**1"/2.50mm

36G stacked on the 40G Galvanized plate is a minimum weight requirement for the Aurora Cantilever.

NOTE: When stacking plates, bolts will only "bite" to bottom plate. Rotate thread-less holes on additional stacking plates to match threaded holes on bottom plate.

Heavier stack options are available.



36G-SQx2 Double Galvanized Plate Stack

W:400 lbs./181 kg. **D:**36"/91cm **H:**1"/2.50mm

Double stack 36G-SQ is a minimum weight requirement for the square Galvanized plates for the Aurora Cantilever.

NOTE: When stacking square plates, there is a dedicated threaded "bottom" plate. Additional top plates will not be threaded. Bolts only bite to bottom plate.



ARU-480 Free-Standing Wheel Base

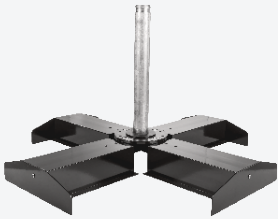
W:80 lbs./36 kg. **D:**36"/91cm **H:**5"/13cm

Galvanized steel box frame slotted for 12 (16x16x2) concrete pavers and matte silver anodized aluminum lid. Locking caster wheels and leveling feet are included. *Pavers are not included.*

SHIPS EMPTY



MS



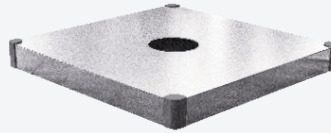
XB Modular Free-Standing Base

W:48 lbs./21 kg. **D:**40"/101cm **H:**4.25"/10cm

Holds 1-3 16" pavers per quadrant (8-12 total pavers). Minimum weight per quadrant must be 70 lbs. Pavers can be purchased from your local hardware or garden supplier. Must be a minimum weight of 35 lbs. each.

PAVERS NOT INCLUDED. ASSEMBLY REQUIRED.

When **XBC** is in use, only 2 pavers per quadrant can be used.



XBC Modular Free-Standing Base Cover

W:4 lbs./2 kg. **D:**40"/101cm **H:**4.5"/11cm

Modular aluminum beauty cover for the XB Free-Standing base.

Can be purchased separately or with the XB Free-Standing Base.

ASSEMBLY REQUIRED.



SM



ARU-DPS Surface Mounting Plate

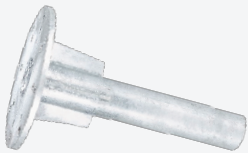
W:12 lbs./5 kg. **D:**12.5"/32cm **H:**5"/12.7mm

Direct surface mounting deck plate. Can be mounted to concrete or wood deck or any stable solid surface.

Please consult a licensed professional for in-ground or surface mounting installations.



SM



ARU-IG In-Ground Mount

W:18 lbs./8 kg. **D:**8"/20cm **H:**20"/50cm

In-Ground mounting stem for concrete, soil, hard clay.

Please consult a licensed professional for in-ground or surface mounting installations.