

# Fire Station Climber - Freestanding • Model TFR05580XX

## INSTALLATION GUIDELINE

**USER GROUP:** 2-5 Years, 5-12 Years

**RECOMMENDED CREW:** 2-3 People

**TOOLS REQUIRED:**

- TT-30 Torx
- Level, Square
- Auger / Post Hole Digger / Shovel
- Drill Bits: None
- High Speed 3/8" Electric Drill with Clutch

**NOTE:** Use of any other driver may result in damage to tool and/or hardware!

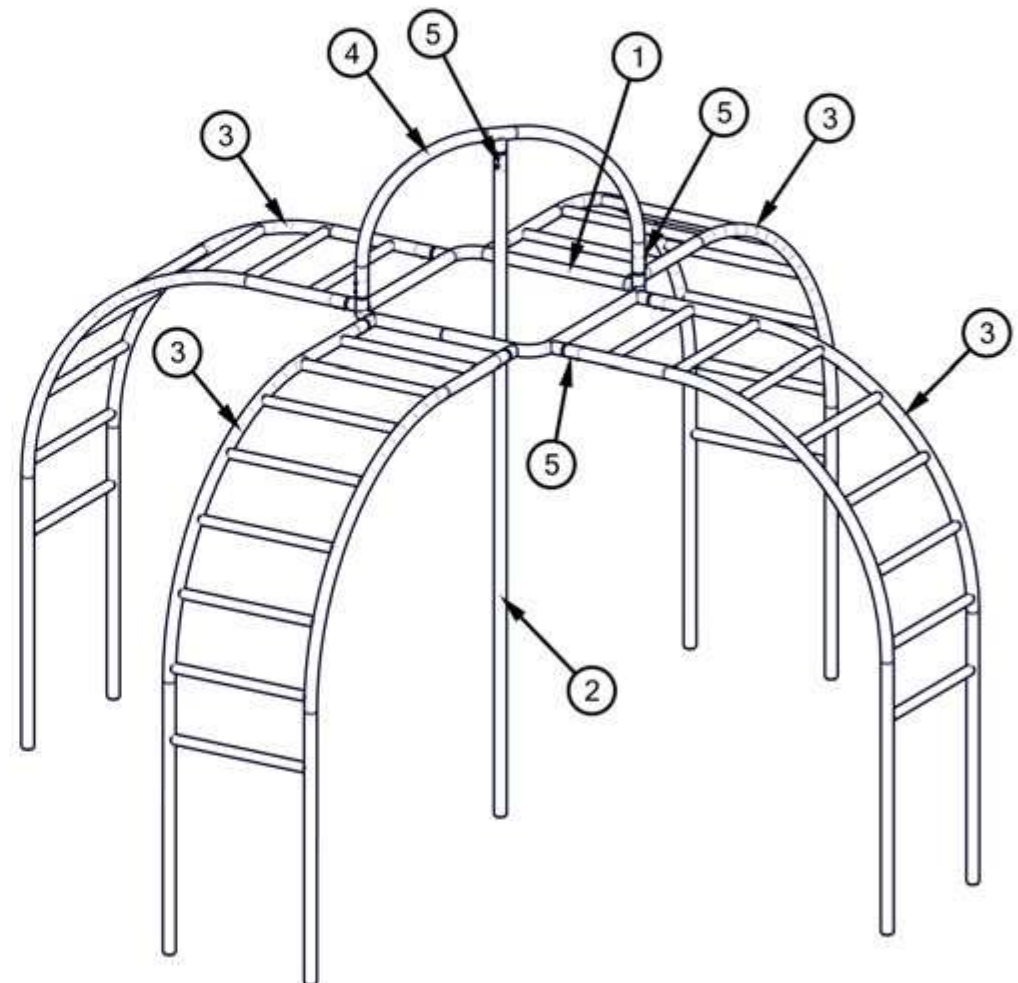
**INSTALLATION TIME:** 1 Hour

**WEIGHT:** 221 lbs.

**CONCRETE REQUIRED:** (20.2) 80lb. bags - 12.1 ft<sup>3</sup>

**NOTE:** Concrete must have a minimum rating of 2,500 psi and must be mixed per manufacturer's recommendations.

| ITEM | Part No.   | QTY | DESCRIPTION                                     |
|------|------------|-----|-------------------------------------------------|
| 1    | AFB45578XX | 1   | Wldmt. - Center Ring/ Fire Station Climber      |
| 2    | FAB35573XX | 1   | Fire Station Climber Pole                       |
| 3    | AFB45577XX | 4   | Wldmt. - Fire Station Climber / Ladder          |
| 4    | AFB45579XX | 1   | Wldmt. - Arch Top / Fire Station Climber        |
| 5    | HWS0021    | 22  | Screw 1/4"-20 x 1" TORX Self Tapping w/Patch SS |



### PRE-INSTALLATION CHECK:

Customer is responsible for verifying materials received by comparing received items with packing list. If any parts are missing or damaged, contact your local sales representative immediately.

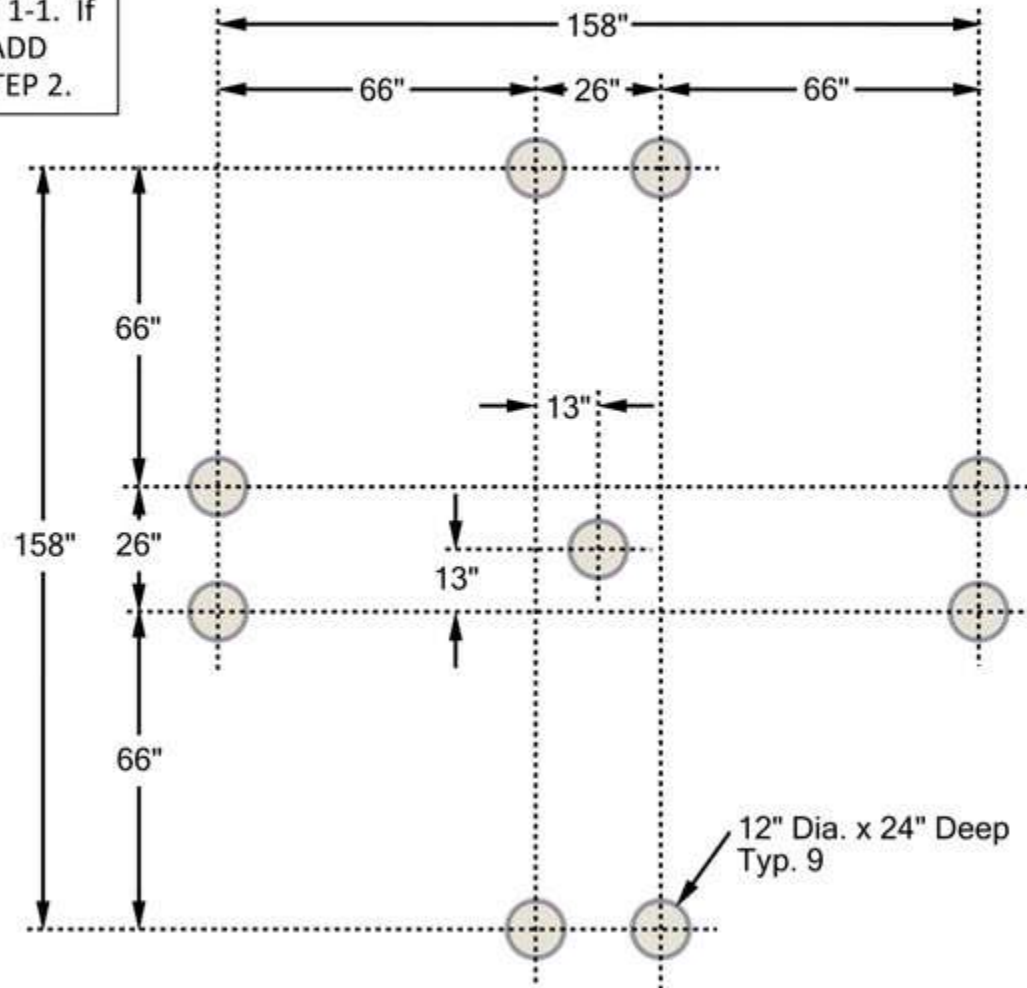
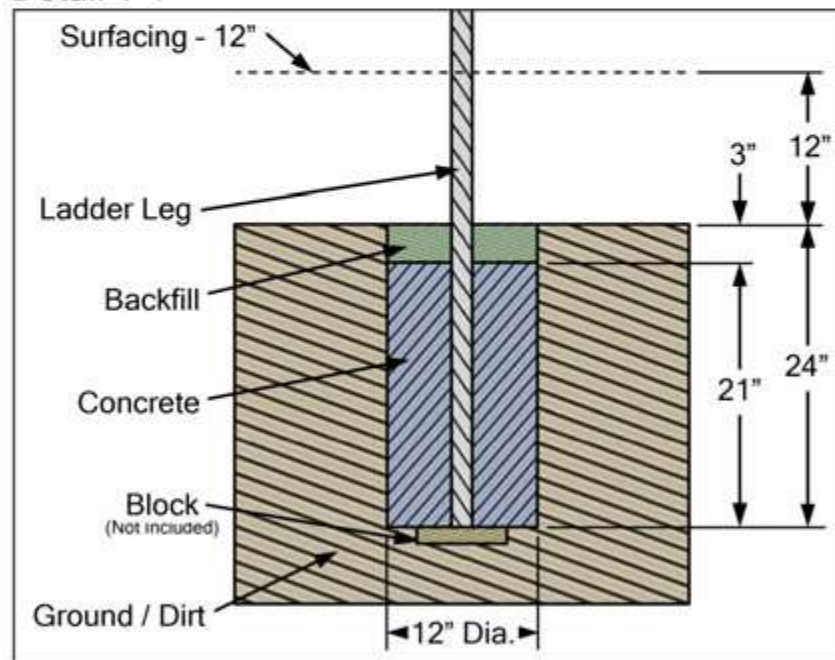
Supplier is not responsible for items discovered missing after 72 hours from time of delivery.

Before beginning installation, all installers must read and understand the Installation Introduction manual as supplied. If you did not receive a copy, or if you have any questions regarding any information in the Installation Instructions or this Installation Guideline, contact your local sales representative.

### STEP 1

Prepare footing holes. Refer to site plan drawing and site elevation drawing for placement of all support posts. Installer is responsible for proper location of all support posts. Footing hole spacing is shown at right. Footing holes for support posts must be 12" diameter and 24" deep plus 12" surfacing. Place one block (not included) into bottom of each footing hole. See Detail 1-1. If surfacing is less than 12", deepen footing holes as needed. **DO NOT ADD CONCRETE.** Footing holes will be completed at STEP 4. Proceed to STEP 2.

Detail 1-1

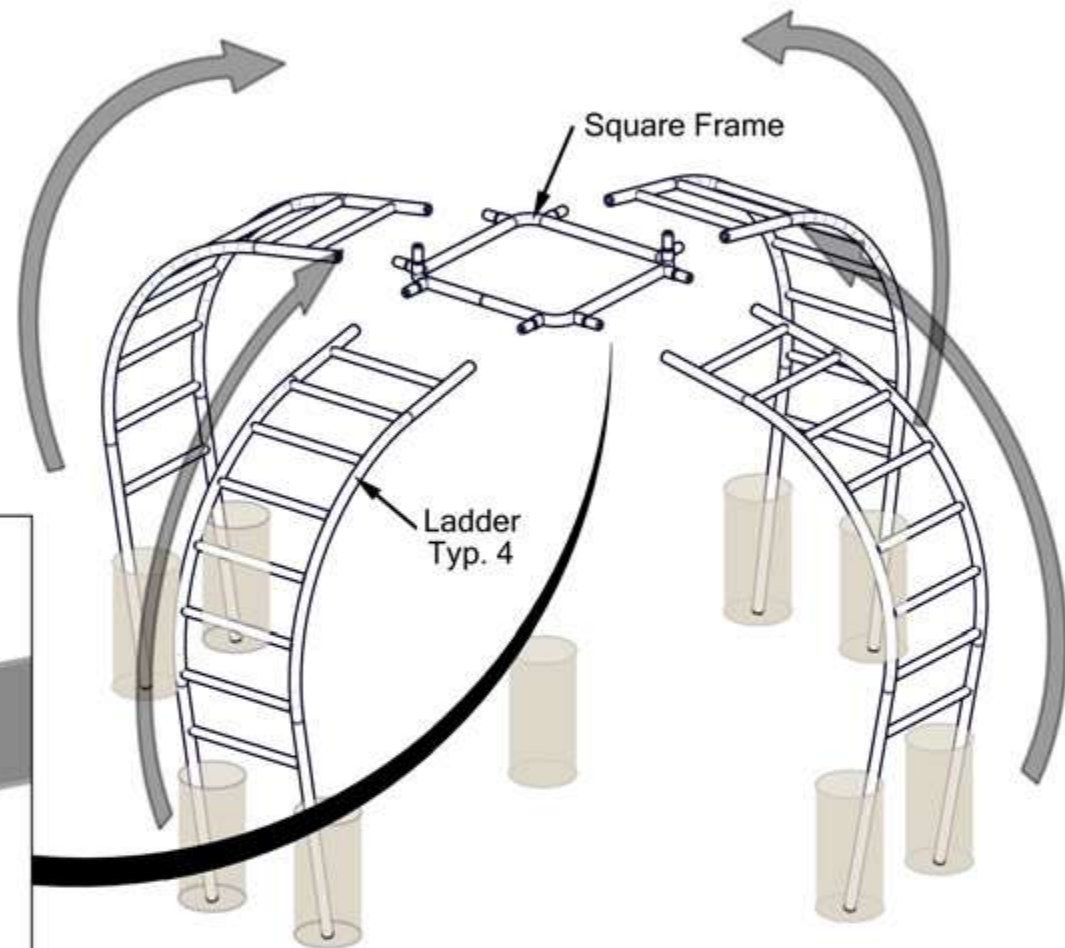
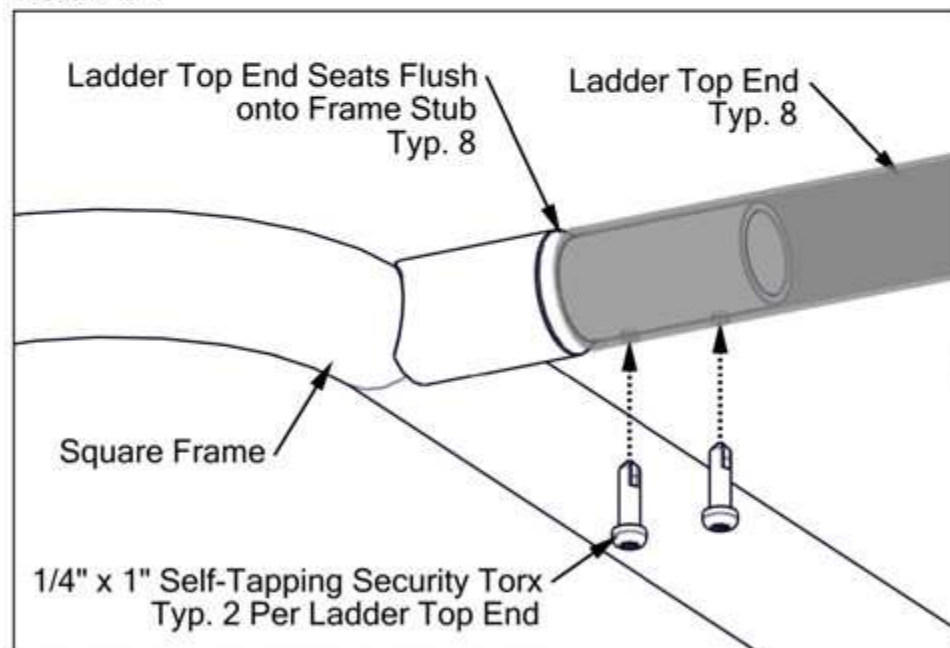




**STEP 2**

Place ladders into footing holes. Ensure blocks are beneath ladder legs. Use square frame to connect all ladder frames together. Top two (2) ends of each ladder should seat flush over stubs on square frame. At each ladder leg, secure to frame stub with two (2) 1/4" x 1" self-tapping security Torx through pre-drilled holes. See Detail 2-1. Repeat for all ladder top ends.

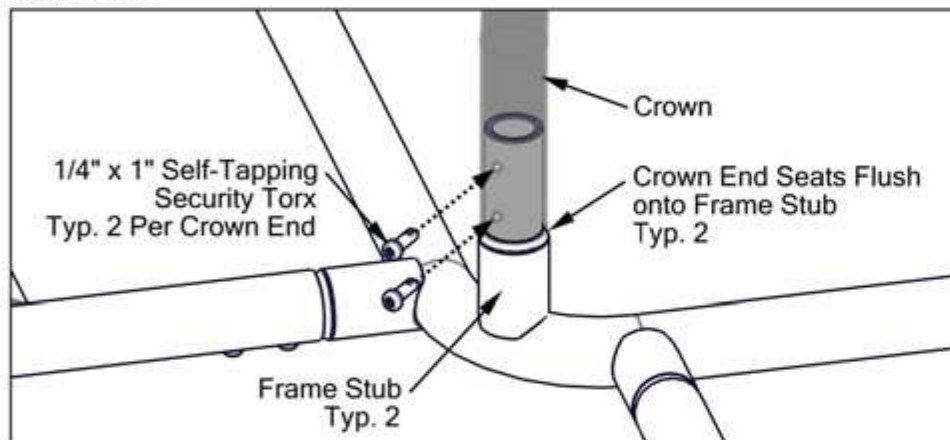
**Detail 2-1**



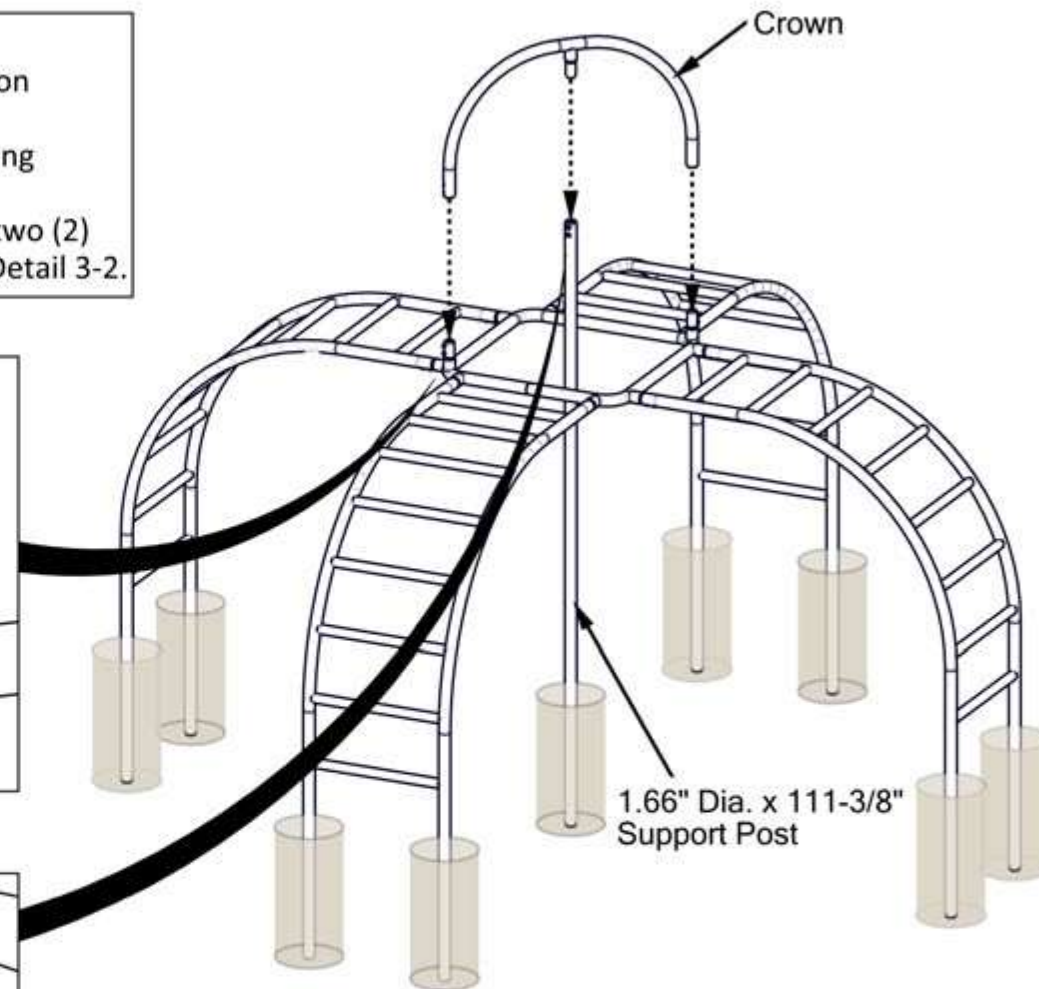
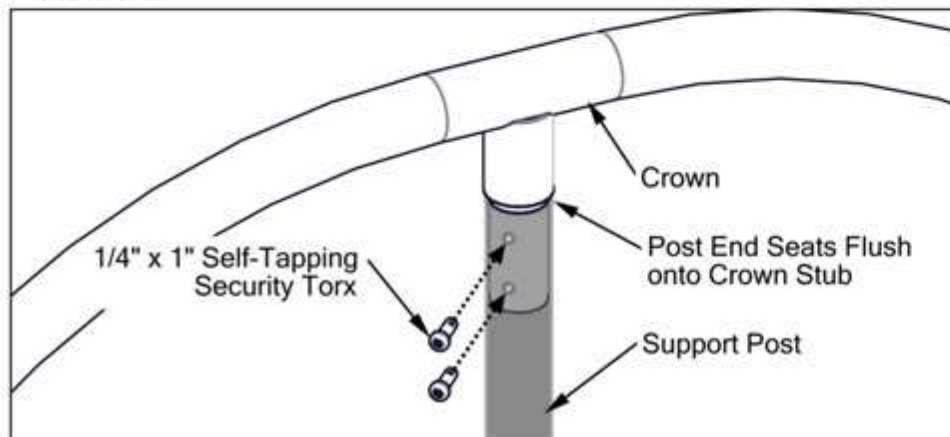
### STEP 3

Place support post into footing hole. Place crown ends onto stubs on square frame. Crown center stub fits into top end of support post. Secure each end of crown to frame with two (2) 1/4" x 1" self-tapping security Torx through pre-drilled holes. See Detail 3-1. Repeat for opposite end of crown. Secure crown center to support post with two (2) 1/4" x 1" self-tapping security Torx through pre-drilled holes. See Detail 3-2.

### Detail 3-1



### Detail 3-2



### STEP 4

Complete setting of footing holes. Ensure ladder legs are plumb. Ensure blocks are beneath legs. Fill footing holes with concrete to within 3" from ground surface. Allow concrete to cure based upon manufacturer's instructions. Backfill footing holes with dirt, flush with grade. See Detail 4-1 for footing hole details. Check all connections and ensure structure is stable. All concrete must be fully cured before use of structure. Installation is complete. Place one (1) Age Appropriate Sticker on structure in a clearly visible location.

### Detail 4-1

