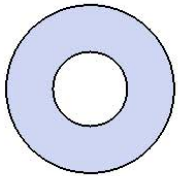


Model # T6RC4-4S

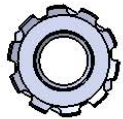
# HARDWARE



5/16" x 1"  
Machine Bolt



5/16" Washer



5/16" Washer

# PRODUCT SPECIFICATIONS

## **T6RC4-4S WALK THROUGH INGROUND MOUNT TABLE**

Seat & Back: 2" x 2" x 1/8" formed angle frame with 1-1/2" radius corners. 3/4" #9 steel expanded metal. 7 gauge x 1-1/2" flat bar center support and mounting bracket understructure. Electrically MIG welded.

Coating: Oven fused functionalized polyethylene copolymer-based thermoplastic. Fluidized bed coating application with superior mechanical performance, impact resistance and UV-stability.

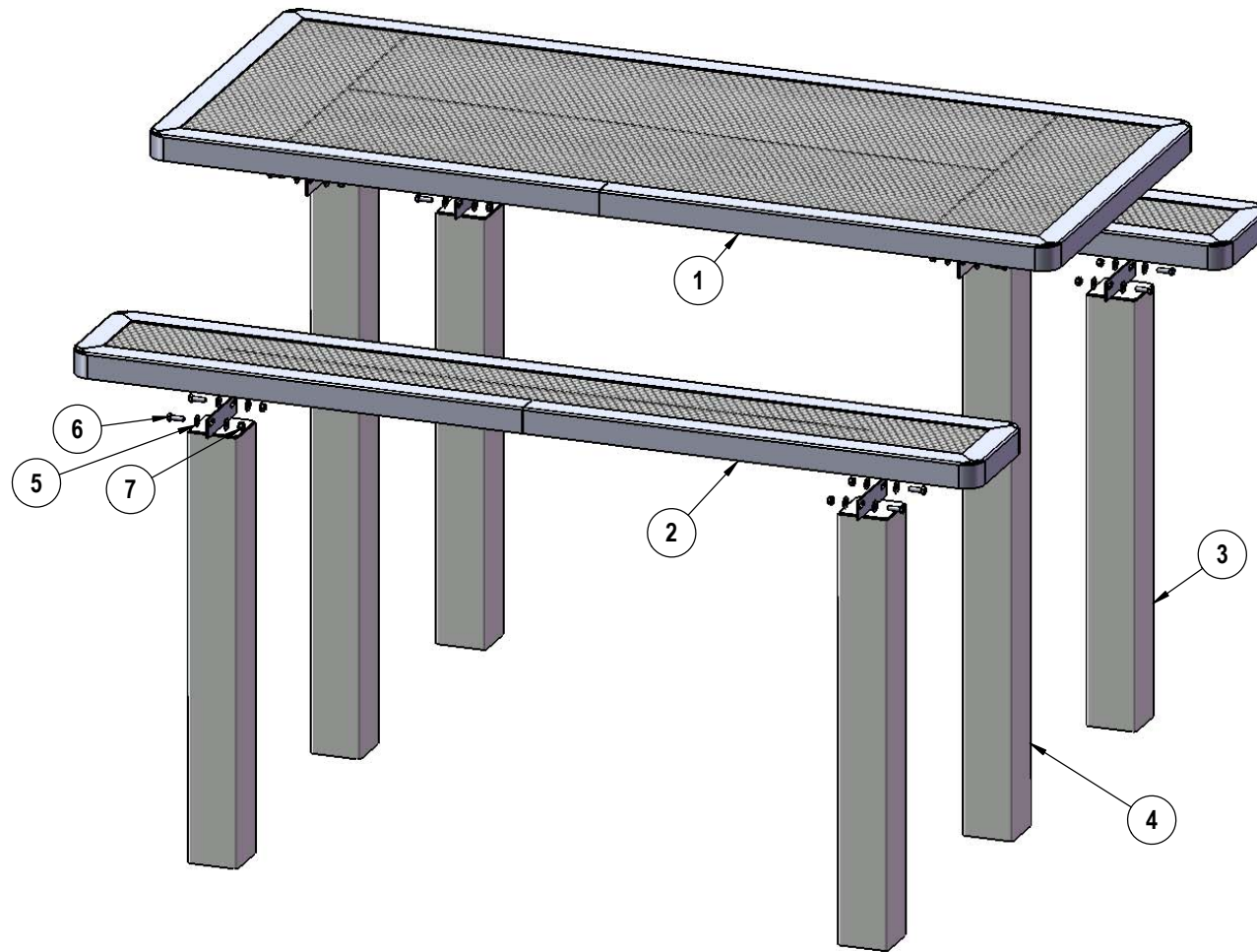
Frame: 4 x 4 x 11 gauge structural steel square tubing. Legs are capped with a 4 x 4 x 3/16" steel flat bar. Seat and top mounting points 7 gauge x 1-1/2" die stamped steel flat bar. All electrically MIG welded.

Frame Coating: Electrostatic powder coated application oven cured.

Hardware: All stainless steel hardware fasteners.

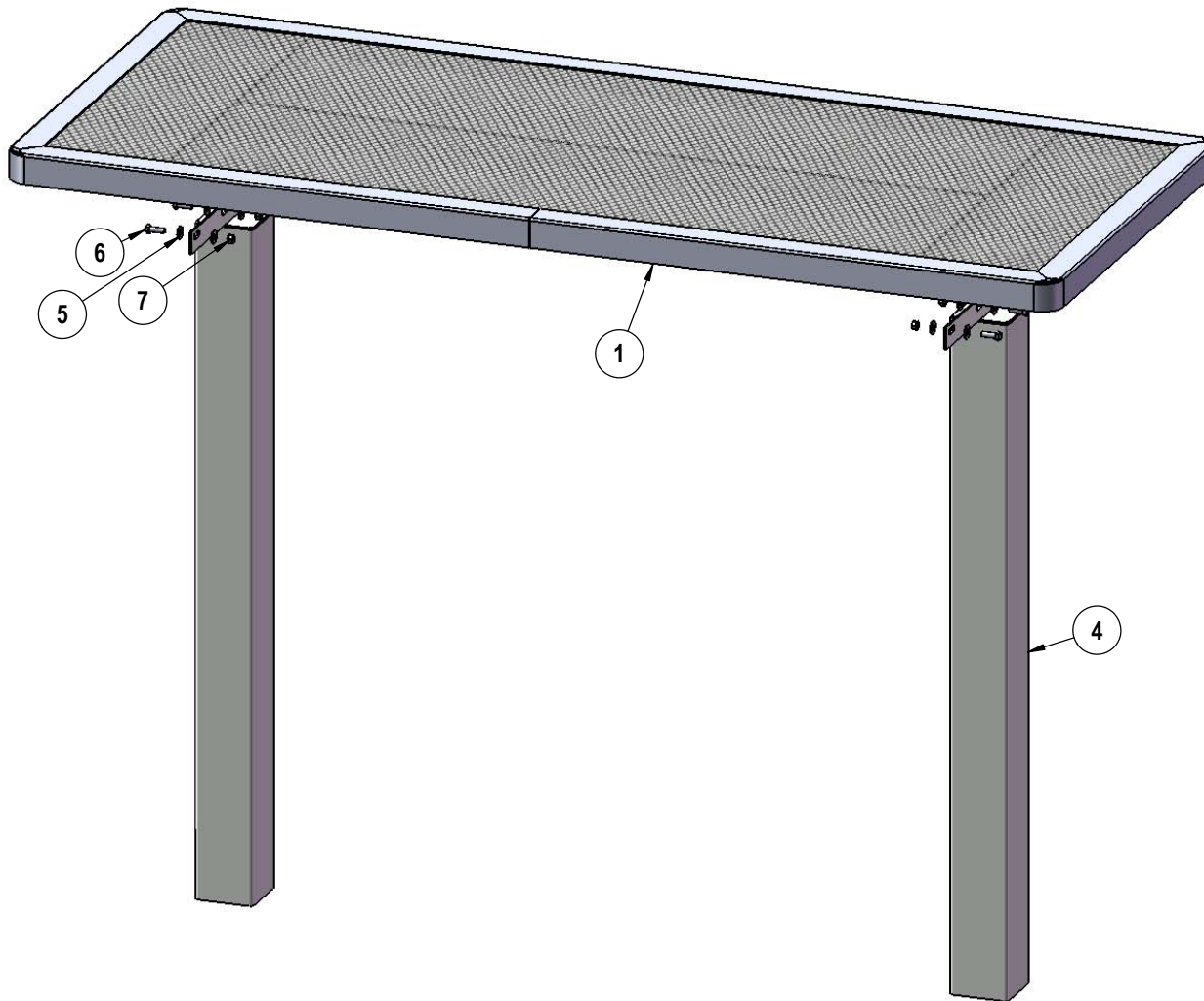
Dimensions: Top is 30" wide x 72" long x 30" high. Seats are 10" wide x 72" long x 18-3/16" high. Outside to outside dimensions are 62" x 72".

# COMPONENTS



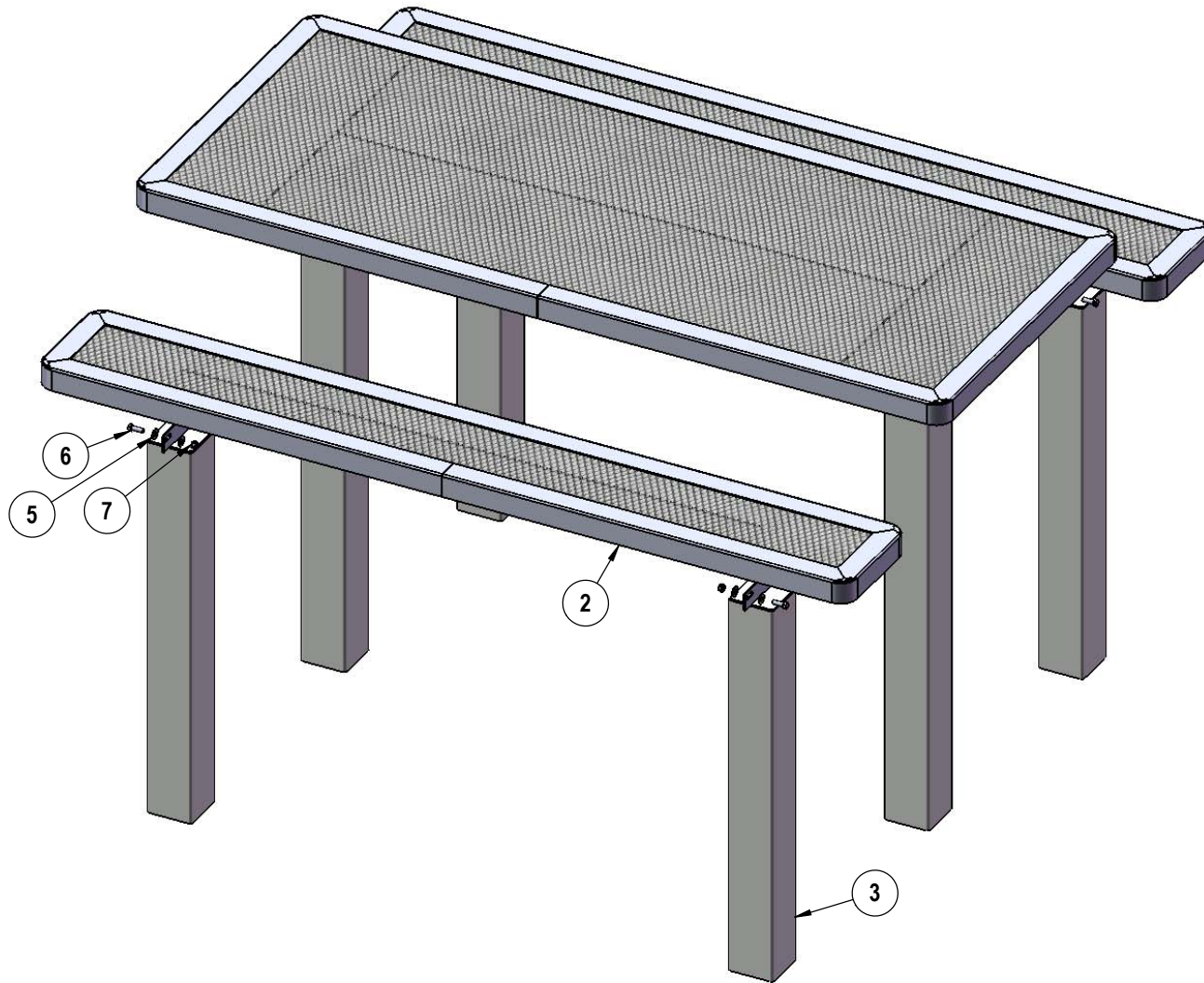
| ITEM NO. | PartNo     | DESCRIPTION                            | QTY |
|----------|------------|--|-----|
| 1        | RC72-T     | 6' regal expanded top                  | 1   |
| 2        | RC72-S     | 6' long x 10" wide regal expanded seat | 2   |
| 3        | P-V349S-S  | Vinyl S Seat leg                       | 4   |
| 4        | P-V349S-T  | Vinyl S top leg                        | 2   |
| 5        | 33-02-0007 | 5/16" SS Washer                        | 32  |
| 6        | 33-05-0029 | 5/16" x 1" Machine Bolt (SS)           | 16  |
| 7        | 33-03-0012 | 5/16" Kep Nut (SS)                     | 16  |

## STEP 1



Attach the top to the top legs as shown using specified hardware.

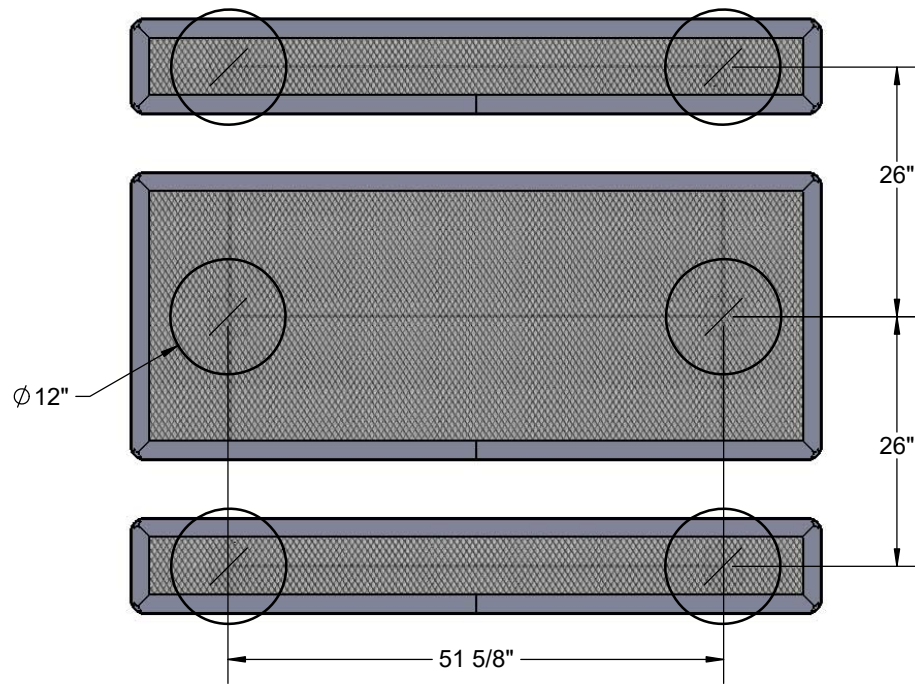
## STEP 2



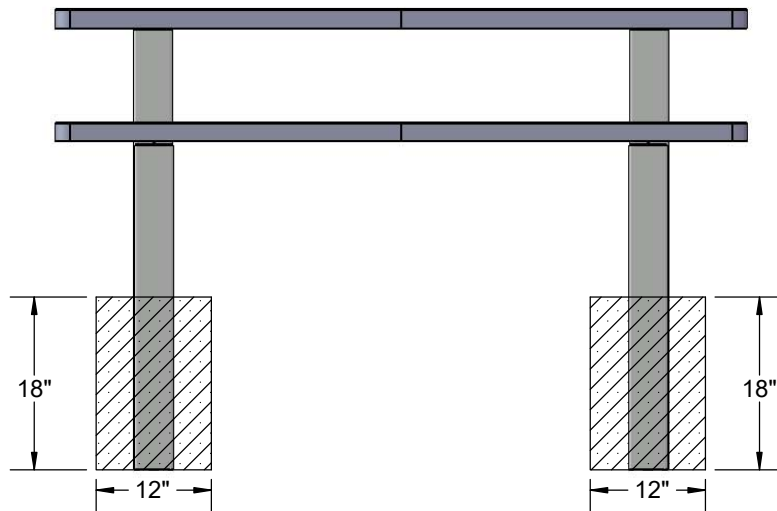
Attach the seats to the seat legs as shown using specified hardware.



## STEP 2



Estimated Required Concrete:  
19 - 50 lb Bags of Concrete Mix



# OVERALL DIMENSIONS

